

APPENDIX B:

ENVIRONMENTAL JUSTICE COMMUNITY IMPACT ASSESSMENT

Environmental Justice Community Impact Assessment

**US 27 to I-75 Corridor Scoping Study
Jessamine, Fayette and Madison Counties
Item No. 7-249.00**

TABLE OF CONTENTS

1.0	INTRODUCTION.....	1
2.0	WHAT IS ENVIRONMENTAL JUSTICE?.....	1
2.1	Definitions.....	1
3.0	METHODOLOGY.....	2
4.0	CENSUS DATA ANALYSIS	2
4.1	Population by Persons of Minority Origin.....	3
4.2	Population by Poverty Level	5
4.3	Population by Person 65 and Over.....	9
5.0	CONCLUSION	12

TABLE OF TABLES

TABLE B1: POPULATION OF STUDY AREA.....	4
--	----------

TABLE OF FIGURES

FIGURE B1: MINORITY POPULATION BY CENSUS BLOCK GROUP	6
FIGURE B2: MINORITY POPULATION BY CENSUS BLOCK	7
FIGURE B3: LOW-INCOME POPULATION BY CENSUS BLOCK GROUP	8
FIGURE B4: ELDERLY POPULATION BY CENSUS BLOCK GROUP	10
FIGURE B5: ELDERLY POPULATION BY CENSUS BLOCK.....	11

1.0 Introduction

The intent of this document is to assess the community demographics and characteristics in the study area for the US 27 to I-75 Corridor Scoping Study that includes a southern portion of Fayette County, Jessamine County east of US 68, and Madison County north of Richmond and west of I-75.

This document was compiled using data from the 2000 U.S. Census Bureau and the Kentucky State Data Center. The information contained within will assist the Kentucky Transportation Cabinet (KYTC) in making decisions pertaining to the study that will comply with Executive Order 12898, which states that any “disproportionately high and adverse human health or environmental effects of its programs, policies, and activities on minority populations and low-income populations” should be identified and addressed as appropriate.

2.0 What is Environmental Justice?

Environmental Justice (EJ) is defined by the U.S. Environmental Protection Agency as:

“The fair treatment and meaningful involvement of all people regardless of race, color, national origin, or income with respect to the development, implementation and enforcement of environmental laws, regulations and policies. Fair treatment means that no group of people, including racial, ethnic, or socio-economic group should bear a disproportionate share of the negative environmental consequences resulting from industrial, municipal, and commercial operations or the execution of federal, state, local and tribal programs and policies.”

For a racial, ethnic or socio-economic group to bear a disproportionate share of the negative environmental consequences means that:

1. The minority or low-income group predominately bears the adverse effects, or
2. The adverse effects suffered by the minority and/or low-income populations are appreciably more severe or greater in magnitude than the adverse effects that non-minority and non-low-income population suffer.

2.1 Definitions

Low-income and minority populations are defined by the USDOT Order 5610.2 on EJ, issued in the April 15, 1997 Federal Register.

Low-Income – a person whose median household income is at or below the U.S. Department of Health and Human Services poverty guidelines.

Minority – a person who is (1) Black (a person having origins in any black racial groups of Africa); (2) Hispanic (a person of Mexican, Puerto Rican, Cuban, Central or South American, or other Spanish culture or origin, regardless of race); (3) Asian American (a person having origins in any of the original peoples of the Far East, Southeast Asia, the Indian subcontinent, or the Pacific Islands); or (4) American Indian and Alaskan Native (a person having origins in any of the original people of North America and who maintains cultural identification through tribal affiliation or community recognition).

Low-Income Population – any readily identifiable group of low-income persons who live in geographic proximity, and, if circumstances warrant, geographically dispersed/transient persons who will be similarly affected by a proposed DOT program, policy or activity.

Minority Population – any readily identifiable groups of minority persons who live in geographic proximity, and if circumstances warrant, geographically dispersed/transient persons (such as migrant workers or Native Americans) who will be similarly affected by a proposed DOT program, policy or activity.

While elderly populations are not mentioned in EO 12898 or USDOT Order 5610.2, the USDOT does recommended that they be considered when evaluating EJ, in accordance with EJ, Title VI of the Civil Rights Act of 1964 and the Kentucky Transportation Cabinet's advocacy of inclusive public involvement and equal treatment of all persons.

3.0 Methodology

The Kentucky Transportation Cabinet's document "Methodology for Assessing Potential Environmental Justice Concerns for KYTC Planning Studies" was used as the methodology for preparing this report.

Data was collected using the U.S. Census Bureau's 2000 Census and the Kentucky State Data Center. Percentages for minorities, low-income, and elderly populations were compared to the following:

- Adjacent and nearby census tracts and block groups;
- County;
- State; and,
- U.S.

A target population may exist if the percentage exceeds that of the general populations or other appropriate unit of analysis as evidenced through the data analysis.

4.0 Census Data Analysis

The U.S. Census Bureau defines geographical units as:

Census Tract (CT) – A small relatively, permanent statistical subdivision of a county delineated by a local group of census data users for the purpose of presenting data. CT boundaries normally follow visible features, but may follow governmental unit boundaries and other non-visible features in some instances; the boundary of a state or county is always a census tract boundary. They are designed to be relatively homogeneous units with respect to populations characteristics, economic status, and living condition, and average 4,000 inhabitants.

Block Group (BG) – A combination of census blocks that is a subdivision of a census tract. A BG consists of all census blocks whose numbers begin with the same digit in a given census tract. It is the smallest geographic entity for which the decennial census tabulates and publishes sample data.

Census Block (CB) – The smallest geographic unit for which the Census Bureau tabulates 100-percent data. Many blocks correspond to individual city blocks bounded by streets, but blocks -- especially in rural areas - may include many square miles and may have some boundaries that are not streets.

The study area is made up of portions of 3 counties in Central Kentucky. There are nineteen census tracts and thirty-eight census block groups. **Table B1** shows the population of these areas.

Detailed tables with information on minority, low-income and elderly populations can be found in the **Appendix**.

4.1 Population by Persons of Minority Origin

The black percentage of Fayette County is 13.48. Tracts 3404 and 4001 have higher black percentages of 20.60 and 19.56 respectively. These tracts correspond to a high black population concentration around Bates Creek Elementary, Middle and High Schools, as well as either side of Armstrong Mill Road north of Man O' War Boulevard. Jessamine County has a black percentage of 3.13. Tract 60502 has a higher percentage at 8.73. This population is concentrated on either side of KY 39, just east of US 27. Madison County's black percentage is 4.44; however none of the census tracts in the study area have a higher percentage.

Fayette County has a Hispanic percentage of 3.29. There are no census tracts in the study area with a higher Hispanic percentage than the average for Fayette County. Jessamine County has a Hispanic percentage of 1.31. Census Tracts 60102 and 60502 have slightly higher Hispanic percentages of 1.65 and 2.11. Madison County's Hispanic percentage is 0.97, with Tracts 107 and 108 having slightly higher percentages of 1.54 and 1.29 respectively. In all counties there are no obvious areas of concern.

Table B1: Population of Study Area

Kentucky	4,041,769		Jessamine County	39,041
			Tract 60102	5,445
Fayette County	260,512		Block Group 1	4,270
Tract 3402	4,509		Block Group 2	1,175
Block Group 1	2,490		Tract 602	4,182
Block Group 2	2,019		Block Group 1	1,114
Tract 3404	4,136		Block Group 2	1,264
Block Group 1	2,098		Block Group 3	1,021
Block Group 2	1,269		Block Group 4	783
Block Group 3	769		Tract 603	2,258
Tract 3405	6,118		Block Group 1	1,403
Block Group 1	2,260		Block Group 2	855
Block Group 2	2,336		Tract 60502	4,465
Block Group 2	1,522		Block Group 1	1,385
Tract 4001	6,057		Block Group 2	1,139
Block Group 1	2,340		Block Group 3	1,941
Block Group 2	3,717		Madison County	70,872
Tract 4004	5,035		Tract 101	6,753
Block Group 1	3,381		Block Group 1	1,216
Block Group 2	1,652		Tract 107	6,362
Tract 4102	8,904		Block Group 1	3,718
Block Group 1	3,890		Block Group 2	2,644
Block Group 2	1,939		Tract 108	3,959
Block Group 2	3,075		Block Group 1	1,285
			Block Group 2	1,596
Study Area	62,646		Block Group 3	1,061

The Asian population of Fayette County is 2.49 percent. Census Tracts 3402, 3407, 3502, 4001, 4003, 4004 and 4102 all have higher Asian percentages, although there are no areas of particular concern, as all are just slightly higher than the overall county percentage. None of the study area tracts in Jessamine County have a higher Asian percentage than the county average, which is 0.60%. Tract 107 in Madison County has a 1.67 percent Asian population, which is higher than county population of 0.74 percent.

Fayette County's American Indian population is 0.19 percent. Tracts 3042, 3404, 3405, 4001, and 4101 all have percentages higher than the county average; however, there is no indication of any areas of concern. The American Indian population of Jessamine County is 0.2 percent, and Tract 60502 is the only area with a higher than average percentage. There are no tracts in Madison County with higher American Indian percentages than the county average of 0.28. There are no American Indian percentages in the study area greater than 1 percent; therefore this is not an area of concern.

Figures B1 and B2 show minority populations by census block groups and census blocks. These figures show that Corridor 7-5 would have an impact on

minority populations in Madison County, near the location it would intersect with I-75.

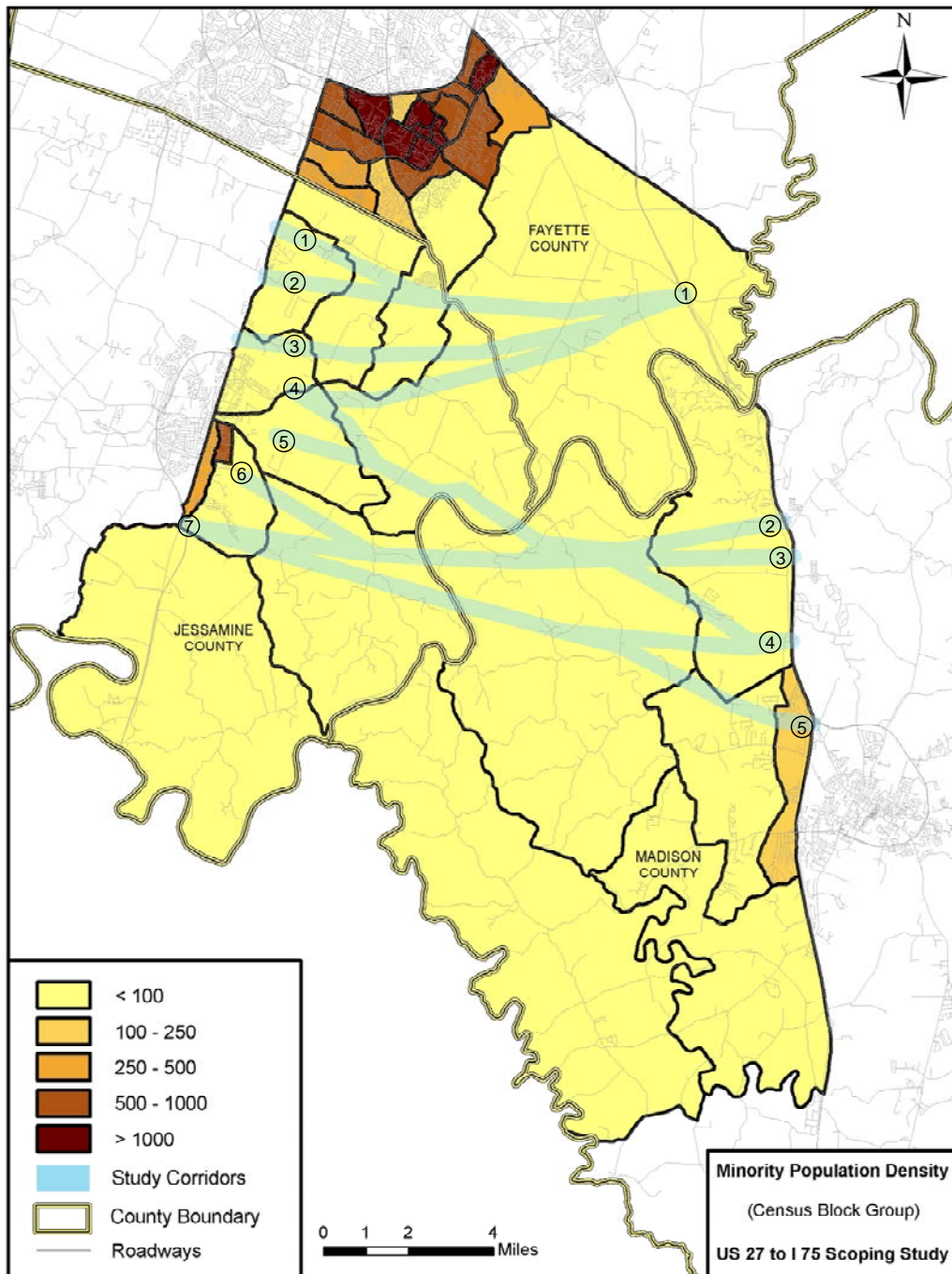
4.2 Population by Poverty Level

In the state of Kentucky, 15.37 percent are living below the poverty level. Fayette and Jessamine Counties have lower poverty levels of 12.27 and 10.00 percent respectively. The percentage in Madison County is higher than the state at 15.45 percent.

Within Fayette County there are three census tracts with poverty levels higher than the county percentage. Tract 3404 has 15.88 percent, Tract 3502 has 20.20 percent, and Tract 4001 has 13.97 percent below the poverty level. Within Tract 3404, Block Group 1 has a very high percentage of 24.98 below the poverty level. This is the area including and surrounding Tates Creek Elementary, Middle and High Schools. Tract 3502 only has 1 block group, so it is unknown if there is a concentration of persons below the poverty level in that tract. Within Tract 4001, 17.14 percent are below the poverty line in Block Group 1. This is the area west of Armstrong Mill Road and north of Man O' War Boulevard.

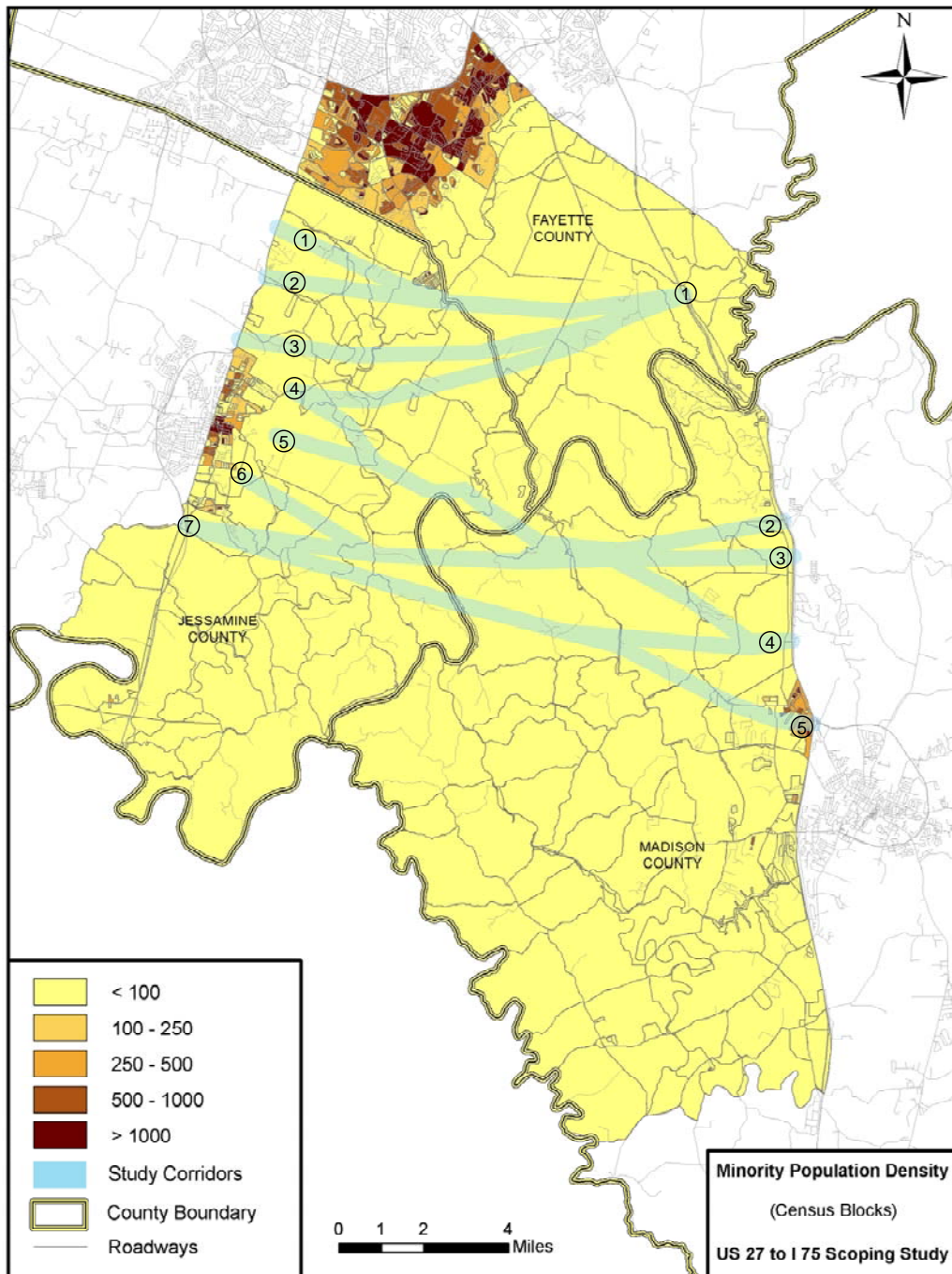
Within Jessamine County, Tracts 602 and 60502 have higher percentages below the poverty level than the county, at 12.94 and 10.68 percent respectively. Block Groups 1 and 3 in Tract 602 have 18.58 and 17.04 percent living below the poverty line. This includes a large area in northeastern portion of the county. Block Group 2 in Tract 60502 has 16.86 percent of the population below the poverty line. This is the area surrounding KY 39 just east of US 27. In addition, although the percentage of the population below the poverty line in Tract 603 is not higher than Jessamine County's percentage, Block Group 2 has a high percentage of the population below the poverty line at 15.09. This block group is on the eastern edge of the county, in the heart of the study area.

Figure B1: Minority Population by Census Block Group



Note: Density shown as persons per square mile.

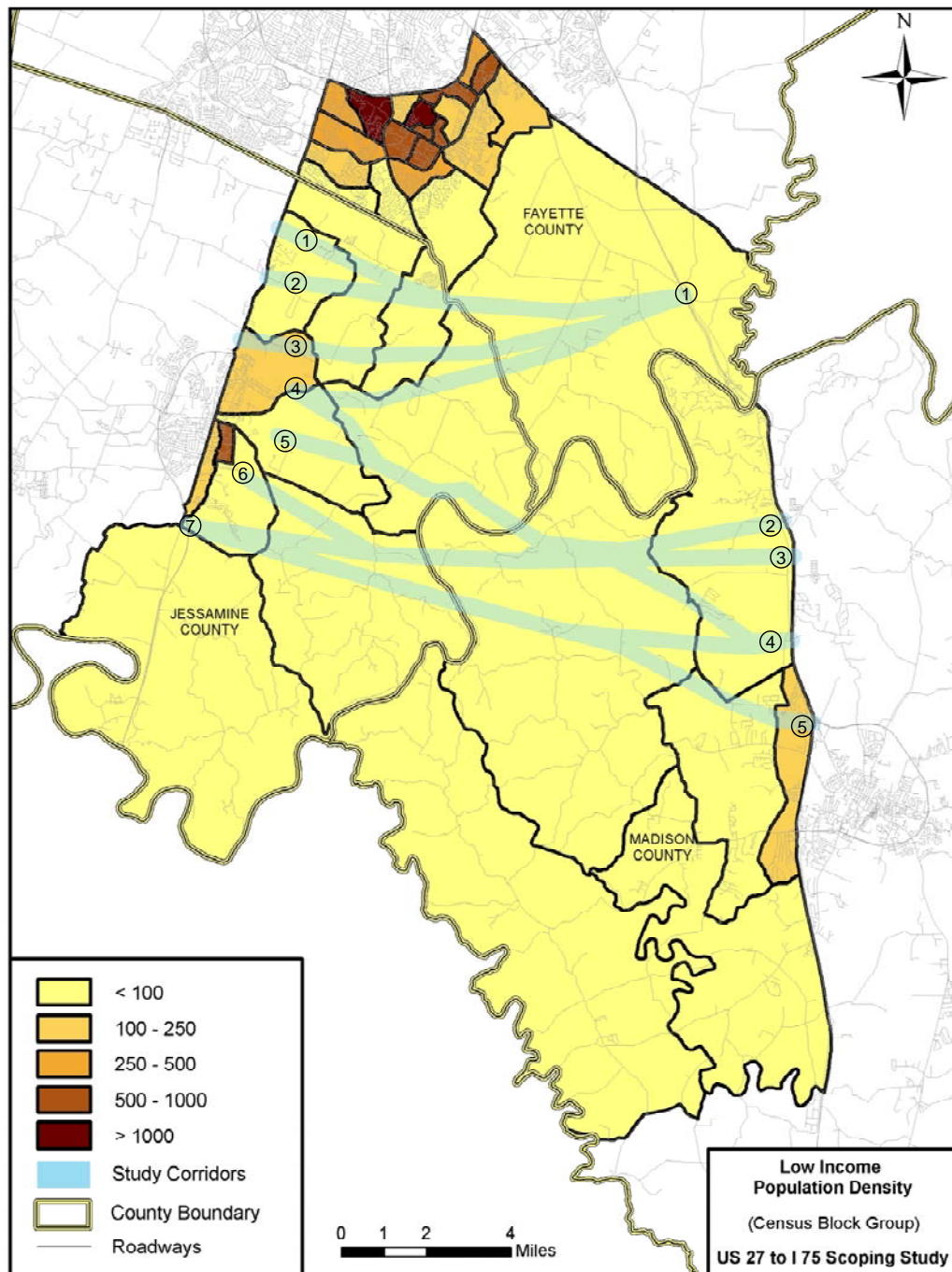
Figure B2: Minority Population by Census Block



Note: Density shown as persons per square mile.

Figure B3 shows the density of the population below the poverty line in the study area by census block group. Several of the possible corridors run through census block groups with low-income population densities of 100 to 250 people per square mile, which should be monitored if those corridors are chosen.

Figure B3: Low-income Population by Census Block Group



Note: Density shown as persons per square mile.

4.3 Population by Person 65 and Over

The state of Kentucky has an elderly population of age 65 and above of 12.49 percent. The elderly populations of Fayette, Jessamine and Madison Counties are all lower than the state population, at 9.98, 9.50 and 9.78 percent, respectively.

Census tract 3404 in Fayette County has an elderly population of 12.74, which is higher than the Fayette County population, but very close to the state population. Within this tract, block groups 1 and 2 have elderly populations of 12.01 and 18.52 percent. These include the areas around Bates Creek Elementary, Middle and High Schools, as well as the Gainesway neighborhood, east of Bates Creek Road and just south of New Circle Road.

Census tracts 60102 and 602 in Jessamine County have elderly populations slightly higher than the county's percentage, at 9.88 and 10.09. There are no specific areas that are particularly high. The northeast portion of the county in general seems to have a slightly higher elderly population.

In Madison County, census tract 108 has an elderly population slightly higher than the county's, at 11.42 percent. All of the block groups in this tract have similar elderly populations. As with Jessamine County, it does not seem that there are specific areas that are particularly high, but that the western portion of the county has a slightly higher elderly population.

Figures B4 and B5 show the population density of elderly persons in the study area by census block group and census block. There are several census blocks and census block groups that potential corridors go through with higher elderly populations. These mostly occur at the endpoints of the corridors, and will need to be analyzed further once a corridor is chosen.

Figure B4: Elderly Population by Census Block Group

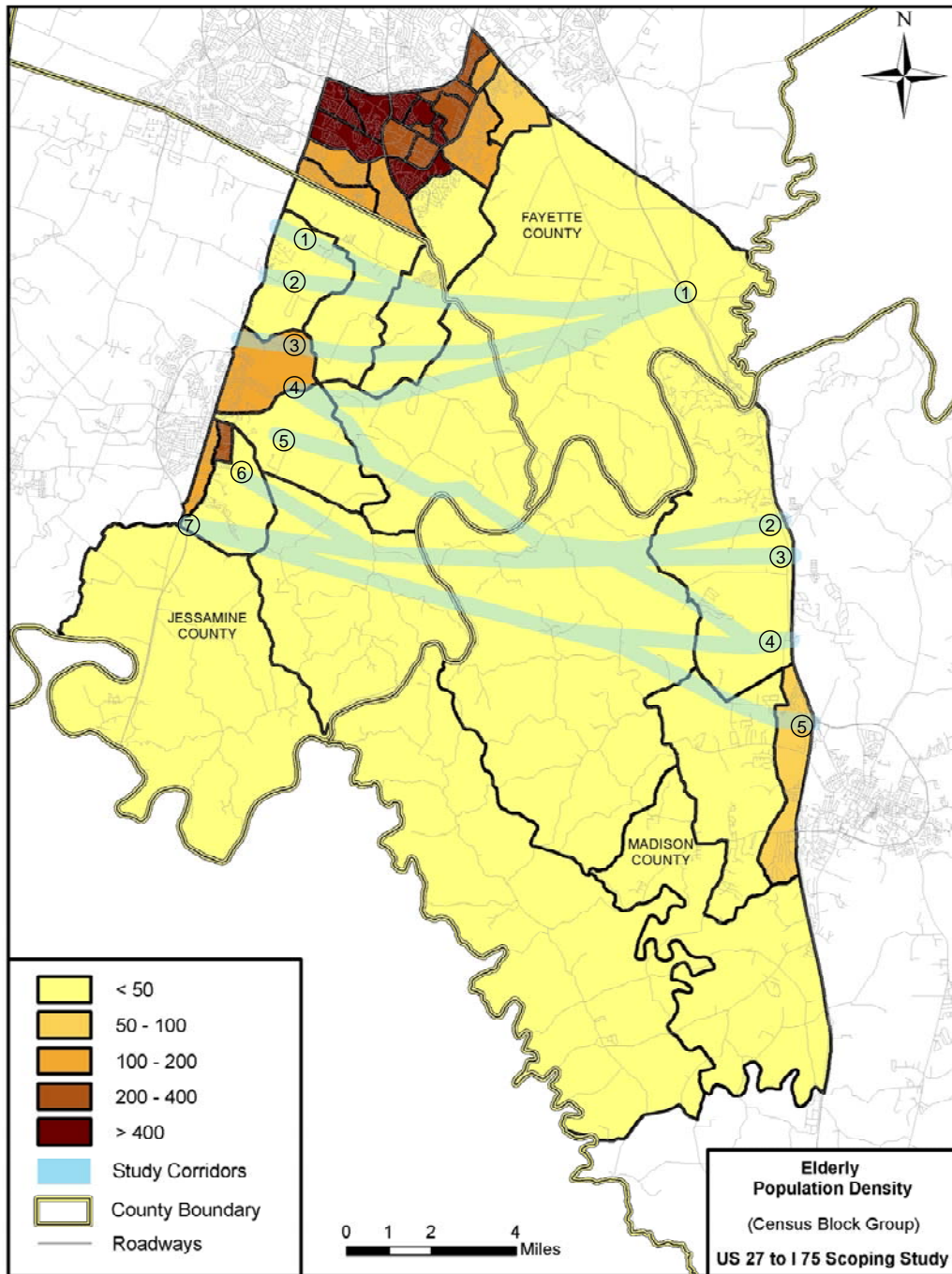
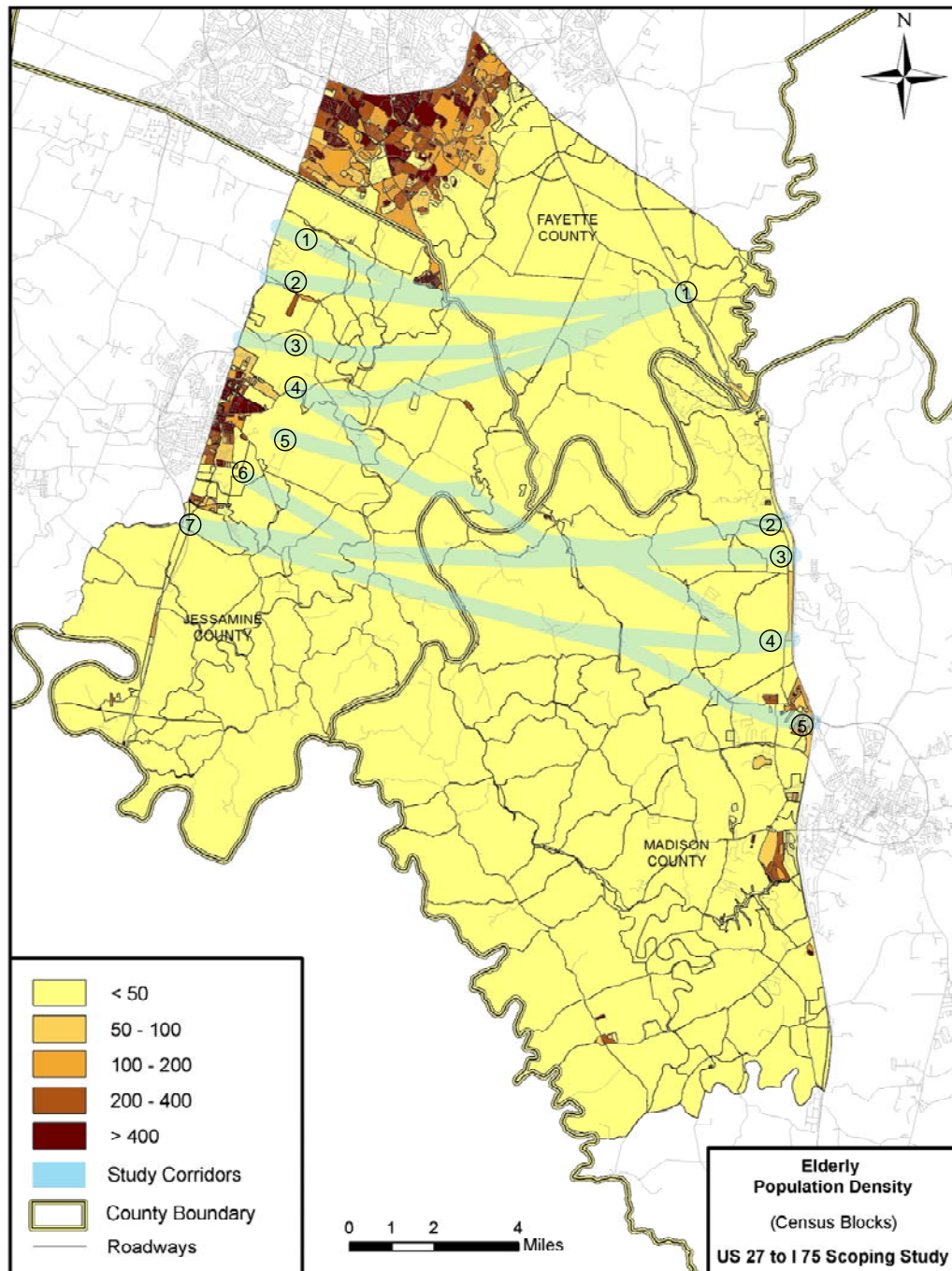


Figure B5: Elderly Population by Census Block



Note: Density shown as persons per square mile.

5.0 Conclusion

A careful analysis of the study area shows several locations within the study area with higher than average minority, low-income and elderly populations. Census tract 3404 has a high percentage of minority, low-income and elderly persons. This census tract, however, is in Fayette County, north of Man O' War Boulevard, which is part of the study area, but no proposed corridors will go through this area. All census block groups in Fayette County that had high minority, low-income and elderly populations were north of Man O' War, and therefore are not locations where a corridor is being considered.

Tract 60502 in Jessamine County, particularly block group 2, surrounding KY 39 just east of US 27, had a high minority and low-income population. This is within the area where a corridor could be located. In Madison County there is a high low-income population in census block group 3 of tract 108, which is the western portion of the county, where a corridor could be located. These areas in Jessamine and Madison Counties should be monitored and taken into consideration when determining the possible locations of corridors. It will be important to consider demographic and/or socioeconomic changes that would be a result of this project.

Of all of the proposed corridors being considered, Corridor 7-5 is the only one that could potentially impact minority populations. The minority population occurs at the very end of the corridor where it ties in to I-75. There is a low-income population that occurs at the very west end of Corridors 3-1, 4-1, 4-3, 4-3, and 4-4. Because there is not data for low-income groups at the census block level, the effect these corridors have on any population will depend on where the corridors end in Nicholasville, and field visits will need to be performed to determine if there are any areas of concern. Corridor 7-5 will go through a low-income population at the very east end of the corridor where it ties into I-75. Elderly populations are more common in the study area. Corridor 1 may go through an elderly population at the Fayette – Jessamine County border. While corridors 3-1 and 4-1 through 4-4 run through a census block group with a higher elderly population, the census blocks reveal that those populations do not occur within the actual corridors. There is an elderly population at the east end of Corridor 7-5 where it ties into I-75. At this location there are elderly, low-income and minority populations. These should be noted if Corridor 7-5 is one of the final corridors for consideration.

Appendix

Census Data Tables and Maps

Population by Race – Census Tracts

	White	% of Population	Black	% of Population	Hispanic	% of Population	Asian	% of Population	American Indian	% of Population	Other	% of Population	Total Population
Kentucky	3,640,899	90.08	295,994	7.32	59,939	1.48	29,744	0.74	8,616	0.21	66,516	1.65	4,041,769
Fayette County	211,120	81.04	35,116	13.48	8,561	3.29	6,490	2.49	507	0.19	3,165	1.21	260,512
Tract 3402	3,643	80.79	520	11.53	58	1.29	156	3.46	18	0.40	31	0.69	4,509
Tract 3404	3,084	74.56	853	20.60	99	2.39	55	1.33	14	0.34	33	0.80	4,136
Tract 3405	5,058	82.67	747	12.21	137	2.24	101	1.65	16	0.26	74	1.21	6,118
Tract 3406	6,147	86.19	666	9.34	112	1.57	94	1.32	11	0.15	63	0.88	7,132
Tract 3407	2,434	82.79	328	11.16	71	2.41	104	3.54	4	0.14	23	0.78	2,940
Tract 3501	2,843	86.86	269	8.22	91	2.78	60	1.83	6	0.18	55	1.68	3,273
Tract 3502	5,615	83.84	717	10.71	91	1.36	180	2.69	5	0.07	35	0.52	6,697
Tract 4001	4,520	74.62	1,185	19.56	96	1.58	176	2.91	13	0.21	26	0.43	6,057
Tract 4003	4,592	88.05	281	5.39	75	1.44	243	4.66	5	0.10	30	0.58	5,215
Tract 4004	4,702	93.39	98	1.95	76	1.51	158	3.14	4	0.08	15	0.30	5,035
Tract 4101	4,878	87.94	472	8.51	63	1.14	70	1.26	12	0.22	19	0.34	5,547
Tract 4102	8,035	90.24	307	3.45	12	0.13	396	4.45	4	0.04	59	0.66	8,904
Jessamine County	36,871	94.44	1,222	3.13	512	1.31	236	0.60	80	0.20	185	0.47	39,041
Tract 60102	5,147	94.53	168	3.09	90	1.65	12	0.22	11	0.20	39	0.72	5,445
Tract 602	4,050	96.84	35	0.84	49	1.17	13	0.31	7	0.17	18	0.43	4,182
Tract 603	2,210	97.87	24	1.06	5	0.22	1	0.04	1	0.04	1	0.04	2,258
Tract 60502	3,963	88.76	390	8.73	94	2.11	27	0.60	11	0.25	30	0.67	4,465
Madison County	65,918	93.01	3,150	4.44	685	0.97	525	0.74	196	0.28	240	0.34	70,872
Tract 101	6,591	97.60	57	0.84	43	0.64	13	0.19	19	0.28	21	0.31	6,753
Tract 107	5,858	92.08	246	3.87	98	1.54	106	1.67	12	0.19	22	0.35	6,362
Tract 108	3,874	97.85	38	0.96	51	1.29	4	0.10	8	0.20	18	0.45	3,959

Population by Race – Census Block Groups

Census Tract	Block Group	White	% of Population	Black	% of Population	Hispanic	% of Population	Asian	% of Population	American Indian	% of Population	Other	% of Population	Total Population
Tract 3402	All	3,643	80.79	520	11.53	58	1.29	156	3.46	18	0.40	31	0.69	4,509
	1	1,899	76.27	370	14.86	32	1.29	107	4.30	11	0.44	18	0.72	2490
	2	1,744	86.38	150	7.43	26	1.29	49	2.43	7	0.35	13	0.64	2019
Tract 3404	All	3,084	74.56	853	20.60	99	2.39	55	1.33	14	0.34	33	0.80	4,136
	1	1,347	64.20	609	29.03	41	1.95	40	1.91	10	0.48	16	0.76	2098
	2	1,209	95.27	33	2.60	26	2.05	7	0.55	1	0.08	12	0.95	1269
	3	528	68.66	211	27.44	32	4.16	8	1.04	3	0.39	5	0.65	769
Tract 3405	All	5,058	82.67	747	12.21	137	2.24	101	1.65	16	0.26	74	1.21	6,118
	1	1,871	82.79	274	12.12	41	1.81	33	1.46	5	0.22	19	0.84	2260
	2	2,014	86.22	217	9.29	43	1.84	43	1.84	9	0.39	20	0.86	2336
	3	1,173	77.07	256	16.82	53	3.48	25	1.64	2	0.13	35	2.30	1522
Tract 4001	All	4,520	74.62	1,185	19.56	96	1.58	176	2.91	13	0.21	26	0.43	6,057
	1	1,624	69.40	632	27.01	43	1.84	12	0.51	4	0.17	6	0.26	2340
	2	2,896	77.91	553	14.88	53	1.43	164	4.41	9	0.24	20	0.54	3717
Tract 4004	All	4,702	93.39	98	1.95	76	1.51	158	3.14	4	0.08	15	0.30	5,035
	1	3,100	91.69	80	2.37	49	1.45	143	4.23	4	0.12	6	0.18	3381
	2	1,602	96.97	18	1.09	27	1.63	15	0.91	0	0.00	9	0.54	1652
Tract 4102	All	8,035	90.24	307	3.45	129	1.45	396	4.45	4	0.04	59	0.66	8,904
	1	3,456	88.84	141	3.62	87	2.24	203	5.22	3	0.08	41	1.05	3890
	2	1,717	88.55	98	5.05	15	0.77	82	4.23	1	0.05	3	0.15	1939
	3	2,862	93.07	68	2.21	27	0.88	111	3.61	0	0.00	15	0.49	3075
Tract 60102	All	5,147	94.53	168	3.09	90	1.65	12	0.22	11	0.20	39	0.72	5,445
	1	4071	95.34	89	2.08	73	1.71	12	0.28	9	0.21	34	0.80	4270
	2	1076	91.57	79	6.72	17	1.45	0	0.00	2	0.17	5	0.43	1175
Tract 602	All	4,050	96.84	35	0.84	49	1.17	13	0.31	7	0.17	18	0.43	4,182
	1	1085	97.40	13	1.17	19	1.71	3	0.27	2	0.18	9	0.81	1114
	2	1219	96.44	9	0.71	18	1.42	4	0.32	4	0.32	2	0.16	1264
	3	984	96.38	9	0.88	7	0.69	3	0.29	1	0.10	7	0.69	1021
	4	762	97.32	4	0.51	5	0.64	3	0.38	0	0.00	0	0.00	783
Tract 603	All	2,210	97.87	24	1.06	5	0.22	1	0.04	1	0.04	1	0.04	2,258
	1	1365	97.29	23	1.64	3	0.21	0	0.00	1	0.07	1	0.07	1403
	2	845	98.83	1	0.12	2	0.23	1	0.12	0	0.00	0	0.00	855
Tract 60502	All	3,963	88.76	390	8.73	94	2.11	27	0.60	11	0.25	30	0.67	4,465
	1	1317	95.09	38	2.74	19	1.37	6	0.43	6	0.43	0	0.00	1385
	2	886	77.79	232	20.37	18	1.58	3	0.26	3	0.26	8	0.70	1139
	3	1760	90.67	120	6.18	57	2.94	11	0.57	2	0.10	22	1.13	1941
Tract 101	All	6,591	97.60	57	0.84	43	0.64	13	0.19	19	0.28	21	0.31	6,753
	1	1185	97.45	12	0.99	8	0.66	2	0.16	7	0.58	7	0.58	1216
Tract 107	All	5,858	92.08	246	3.87	98	1.54	106	1.67	12	0.19	22	0.35	6,362
	1	3360	90.37	159	4.28	74	1.99	63	1.69	10	0.27	21	0.56	3718
	2	2498	94.48	87	3.29	24	0.91	35	1.32	2	0.08	1	0.04	2644
Tract 108	All	3,874	97.85	38	0.96	51	1.29	4	0.10	8	0.20	18	0.45	3,959
	1	1270	98.83	10	0.78	9	0.70	1	0.08	3	0.23	1	0.08	1285
	2	1560	97.74	19	1.19	17	1.07	3	0.19	5	0.31	9	0.56	1596
	3	1044	98.40	9	0.85	25	2.36	0	0.00	0	0.00	8	0.75	1061

Population below Poverty Level – Census Tracts

	Population Below Poverty Level	Percent of Population	Age 0-17	% of Total Population	Age 18-64	% of Total Population	Age 65-Over	% of Total Population
United States	33,899,812	12.05	11,746,258	4.17	18,865,180	6.70	3,287,774	1.17
Kentucky	621,096	15.37	203,547	5.03	350,072	8.66	67,477	1.67
Fayette County	31,963	12.27	8,039	3.09	21,810	8.37	2,114	0.81
Tract 3402	416	9.23	88	1.95	316	7.01	12	0.27
Tract 3404	657	15.88	210	5.08	343	8.29	104	2.51
Tract 3405	532	8.70	94	1.54	429	7.01	9	0.15
Tract 3406	366	5.13	124	1.74	229	3.21	13	0.18
Tract 3407	251	8.54	98	3.33	153	5.20	0	0.00
Tract 3501	208	6.36	63	1.92	129	3.94	16	0.49
Tract 3502	1,353	20.20	233	3.48	1,085	16.20	35	0.52
Tract 4001	846	13.97	301	4.97	492	8.12	53	0.88
Tract 4003	254	4.87	7	0.13	247	4.74	0	0.00
Tract 4004	164	3.26	48	0.95	110	2.19	6	0.12
Tract 4101	419	7.55	169	3.05	235	4.24	15	0.27
Tract 4102	314	3.53	137	1.54	169	1.90	8	0.09
Jessamine County	3,904	10.00	1,417	3.63	2,150	5.51	337	0.86
Tract 60102	470	8.63	159	2.92	235	4.32	76	1.40
Tract 602	541	12.94	218	5.21	303	7.25	20	0.48
Tract 603	191	8.46	38	1.68	109	4.83	44	1.95
Tract 60502	477	10.68	192	4.30	258	5.78	27	0.60
Madison County	10,952	15.45	2,777	3.92	7,062	9.96	1,113	1.57
Tract 101	566	8.38	393	5.82	173	2.56	55	0.81
Tract 107	543	8.54	114	1.79	387	6.08	42	0.66
Tract 108	497	12.55	90	2.27	348	8.79	59	1.49

Population below Poverty Level – Census Block Groups

Census Tract	Block Group	Population Below Poverty Level	Percent of Population	Age 0-17	% of Total Population	Age 18-64	% of Total Population	Age 65-Over	% of Total Population
Tract 3402	All	416	9.23	88	1.95	316	7.01	12	0.27
	1	273	10.96	80	3.21	191	7.67	2	0.08
	2	143	7.08	8	0.40	125	6.19	10	0.50
Tract 3404	All	657	15.88	210	5.08	343	8.29	104	2.51
	1	524	24.98	166	7.91	271	12.92	87	4.15
	2	61	4.81	13	1.02	31	2.44	17	1.34
	3	72	9.36	31	4.03	41	5.33	0	0.00
Tract 3405	All	532	8.70	94	1.54	429	7.01	9	0.15
	1	327	14.47	83	3.67	235	10.40	9	0.40
	2	81	3.47	7	0.30	74	3.17	0	0.00
	3	124	8.15	6	0.39	118	7.75	0	0.00
Tract 4001	All	846	13.97	301	4.97	492	8.12	53	0.88
	1	401	17.14	165	7.05	203	8.68	33	1.41
	2	445	11.97	136	3.66	289	7.78	20	0.54
Tract 4004	All	164	3.26	48	0.95	110	2.19	6	0.12
	1	22	0.65	8	0.24	14	0.41	0	0.00
	2	142	8.60	40	2.42	96	5.81	6	0.36
Tract 4102	All	314	3.53	137	1.54	169	1.90	8	0.09
	1	167	4.29	68	1.75	91	2.34	8	0.21
	2	62	3.20	26	1.34	36	1.86	0	0.00
	3	85	2.76	43	1.40	42	1.37	0	0.00
Tract 60102	All	470	8.63	159	2.92	235	4.32	76	1.40
	1	383	8.97	131	3.07	181	4.24	71	1.66
	2	87	7.40	28	2.38	54	4.60	5	0.43
Tract 602	All	541	12.94	218	5.21	303	7.25	20	0.48
	1	207	18.58	76	6.82	111	9.96	20	1.80
	2	127	10.05	39	3.09	88	6.96	0	0.00
	3	174	17.04	98	9.60	76	7.44	0	0.00
	4	33	4.21	5	0.64	28	3.58	0	0.00
Tract 603	All	191	8.46	38	1.68	109	4.83	44	1.95
	1	62	4.42	18	1.28	38	2.71	6	0.43
	2	129	15.09	23	2.69	68	7.95	38	4.44
Tract 60502	All	477	10.68	192	4.30	258	5.78	27	0.60
	1	164	11.84	80	5.78	78	5.63	6	0.43
	2	192	16.86	66	5.79	116	10.18	10	0.88
	3	121	6.23	46	2.37	64	3.30	11	0.57
Tract 101	All	566	8.38	393	5.82	173	2.56	55	0.81
	1	75	6.17	15	1.23	53	4.36	7	0.58
Tract 107	All	543	8.54	114	1.79	387	6.08	42	0.66
	1	474	12.75	114	3.07	350	9.41	10	0.27
	2	69	2.61	0	0.00	37	1.40	32	1.21
Tract 108	All	497	12.55	90	2.27	348	8.79	59	1.49
	1	163	12.68	47	3.66	92	7.16	24	1.87
	2	42	2.63	5	0.31	30	1.88	7	0.44
	3	292	27.52	38	3.58	226	21.30	28	2.64

Elderly Population – Census Tracts

	Age 0-17	% of Total Population	Age 18-64	% of Total Population	Age 65-Over	% of Total Population	Total Population
United States	72,293,812	25.69	174,136,341	61.88	34,991,753	12.43	281,510,483
Kentucky	994,818	24.61	2,542,158	62.90	504,793	12.49	4,041,769
Fayette County	55,395	21.26	179,119	68.76	25,998	9.98	260,512
Tract 3402	859	19.05	3,474	77.05	176	3.90	4,509
Tract 3404	1,078	26.06	2,531	61.19	527	12.74	4,136
Tract 3405	1,471	24.04	4,230	69.14	417	6.82	6,118
Tract 3406	2,011	28.20	4,899	68.69	222	3.11	7,132
Tract 3407	611	20.78	2,233	75.95	96	3.27	2,940
Tract 3501	749	22.88	2,218	67.77	306	9.35	3,273
Tract 3502	962	14.36	5,281	78.86	454	6.78	6,697
Tract 4001	1,549	25.57	4,226	69.77	282	4.66	6,057
Tract 4003	950	18.22	3,836	73.56	429	8.23	5,215
Tract 4004	1,590	31.58	3,156	62.68	289	5.74	5,035
Tract 4101	1,321	23.81	3,671	66.18	555	10.01	5,547
Tract 4102	2,908	32.66	5,646	63.41	350	3.93	8,904
Jessamine County	10,253	26.26	25,080	64.24	3,708	9.50	39,041
Tract 60102	1,463	26.87	3,444	63.25	538	9.88	5,445
Tract 602	1,066	25.49	2,694	64.42	422	10.09	4,182
Tract 603	580	25.69	1,479	65.50	199	8.81	2,258
Tract 60502	1,328	29.74	2,855	63.94	282	6.32	4,465
Madison County	15,476	21.84	48,467	68.39	6,929	9.78	70,872
Tract 101	1,816	26.89	4,477	66.30	460	6.81	6,753
Tract 107	1,538	24.17	4,406	69.25	418	6.57	6,362
Tract 108	939	23.72	2,568	64.86	452	11.42	3,959

Elderly Population – Census Block Groups

Census Tract	Block Group	Age 0-17	% of Total Population	Age 18-64	% of Total Population	Age 65-Over	% of Total Population	Total Population
Tract 3402	All	859	19.05	3,474	77.05	176	3.90	4,509
	1	500	20.08	1922	77.19	68	2.73	2,490
	2	359	17.78	1552	76.87	108	5.35	2,019
Tract 3404	All	1,078	26.06	2,531	61.19	527	12.74	4,136
	1	610	29.08	1236	58.91	252	12.01	2,098
	2	231	18.20	803	63.28	235	18.52	1,269
	3	237	30.82	492	63.98	40	5.20	769
Tract 3405	All	1,471	24.04	4,230	69.14	417	6.82	6,118
	1	495	21.90	1607	71.11	158	6.99	2,260
	2	566	24.23	1626	69.61	144	6.16	2,336
	3	410	26.94	997	65.51	115	7.56	1,522
Tract 4001	All	1,549	25.57	4,226	69.77	282	4.66	6,057
	1	753	32.18	1495	63.89	92	3.93	2,340
	2	796	21.42	2731	73.47	190	5.11	3,717
Tract 4004	All	1,590	31.58	3,156	62.68	289	5.74	5,035
	1	1,204	35.61	2056	60.81	121	3.58	3,381
	2	384	23.24	1100	66.59	168	10.17	1,652
Tract 4102	All	2,908	32.66	5,646	63.41	350	3.93	8,904
	1	1,305	33.55	2449	62.96	136	3.50	3,890
	2	604	31.15	1245	64.21	90	4.64	1,939
	3	999	32.49	1952	63.48	124	4.03	3,075
Tract 60102	All	1,463	26.87	3,444	63.25	538	9.88	5,445
	1	1,180	27.63	2649	62.04	441	10.33	4,270
	2	283	24.09	795	67.66	97	8.26	1,175
Tract 602	All	1,066	25.49	2,694	64.42	422	10.09	4,182
	1	283	25.40	738	66.25	93	8.35	1,114
	2	369	29.19	773	61.16	122	9.65	1,264
	3	243	23.80	660	64.64	118	11.56	1,021
	4	171	21.84	523	66.79	89	11.37	783
Tract 603	All	580	25.69	1,479	65.50	199	8.81	2,258
	1	356	25.37	918	65.43	129	9.19	1,403
	2	224	26.20	561	65.61	70	8.19	855
Tract 60502	All	1,328	29.74	2,855	63.94	282	6.32	4,465
	1	458	33.07	851	61.44	76	5.49	1,385
	2	321	28.18	744	65.32	74	6.50	1,139
	3	549	28.28	1260	64.91	132	6.80	1,941
Tract 101	All	304	25.00	821	67.52	91	7.48	1,216
	1	304	25.00	821	67.52	91	7.48	1,216
Tract 107	All	1,538	24.17	4,406	69.25	418	6.57	6,362
	1	839	22.57	2660	71.54	219	5.89	3,718
	2	699	26.44	1746	66.04	199	7.53	2,644
Tract 108	All	939	23.72	2,568	64.86	452	11.42	3,959
	1	296	23.04	830	64.59	159	12.37	1,285
	2	390	24.44	1044	65.41	162	10.15	1,596
	3	236	22.24	694	65.41	131	12.35	1,061